

SECURITY PROTECTION BURGLARS CAN SEE  
COMBINED WITH CONCEALED PATENTED  
REINFORCEMENT TECHNOLOGY THEY CAN'T

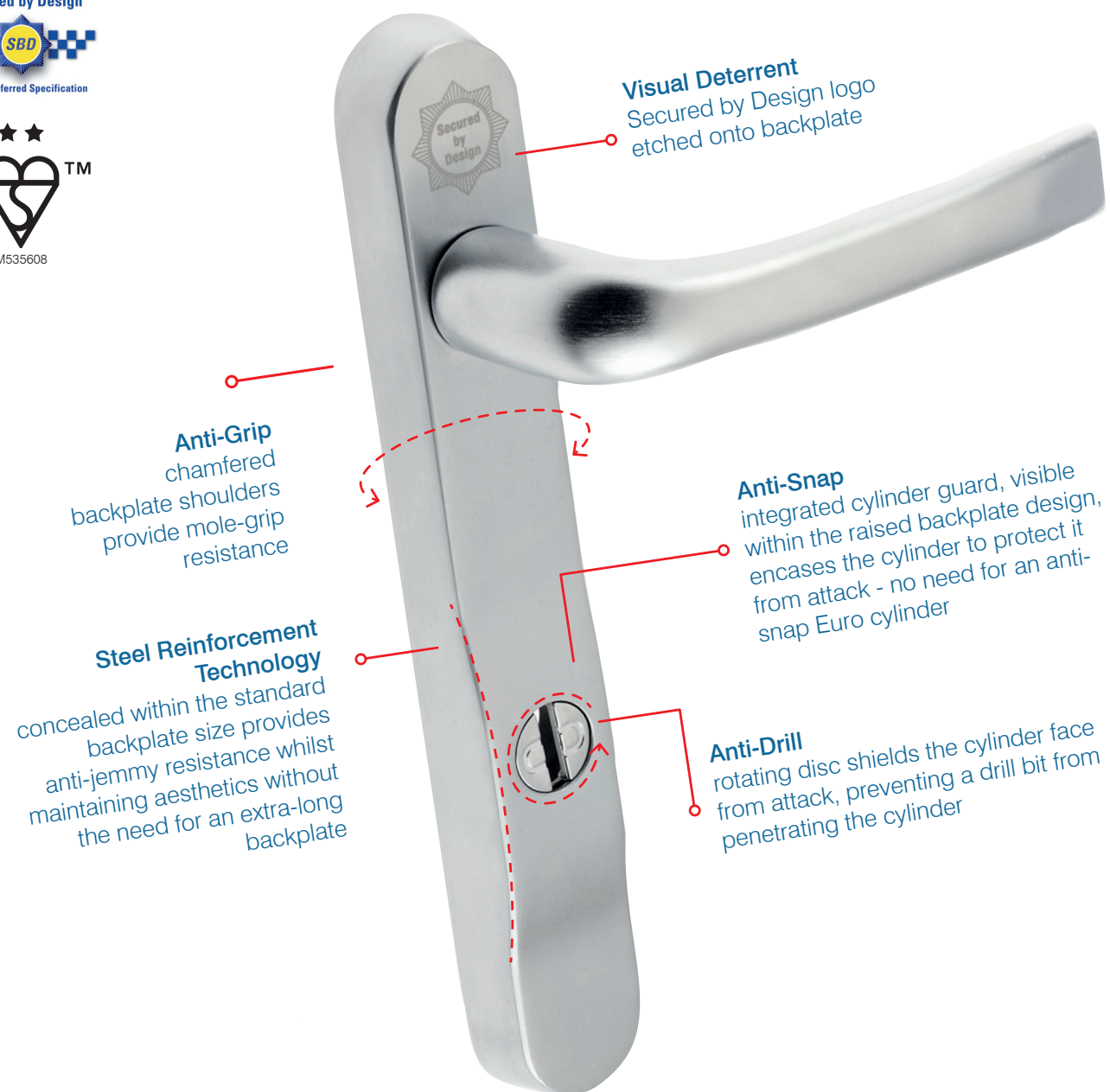
Intelligent Security | It's in our DNA

Security door handles to suit PVCu, timber  
& composite applications



## SECURITY PROTECTION BURGLARS CAN SEE COMBINED WITH CONCEALED PATENTED REINFORCEMENT TECHNOLOGY THEY CAN'T

Enhanced security door handles that provide protection against the latest methods of forced entry and comply to the new enhanced security performance standard TS007: 2012.



### 6 FINISHES



## PROSECURE DOOR HANDLE RANGE

Acting as a visual deterrent the Secured by Design logo etched onto the ProSecure handle backplate offers passive security protection.

Chamfered backplate shoulders provide anti-grip protection for mole grip resistance.

An integrated cylinder guard is visibly raised within the backplate and encases the cylinder to provide anti-snap protection. In addition, the cylinder face is also shielded with a slotted, rotating disc providing an effective barrier against cylinder drilling and unplugging. For ease of fabrication the disc is captive within the backplate.

A deep-drawn steel subframe provides reinforcement inside the zinc alloy backplate, providing strength and stability without the need to lengthen the backplate.

Ergonomic universal lever/lever or lever/pad options are available to suit both left or right handed doors. Finger grips offer comfort during use.

Handlesets are available in two backplate sizes, 220mm and 240mm, to suit most locking systems. A spring module is fitted as standard for use with sprung and unsprung door locks.

ProSecure door handles are supplied complete with three sizes of fixing screws

and two spindles to suit all common door thicknesses.

The ProSecure door handle range has been successfully tested to TS007:2012 and has achieved BSI's two star Kitemark™ accreditation.

The handle range has also been independently tested at the UKAS accredited Mila Test Centre, Exova Warrington and British Standards Institute to the operational reliability requirements of PAS 023, the enhanced security requirements of PAS 024, has achieved the salt spray test requirements of BS EN 1670 achieving grade 5 480 hours, and meets the Official Police Preferred Specification requirements of Secured by Design.

Additionally the range has been tested to BSEN1906: grade 4, successfully achieving 200,000 cycles under load.

ProSecure door handles are suitable for PVCu, Composite, GRP and timber doors and are available in a choice of 6 finishes that suite with other Mila window and door products for a coordinated look.



### The ProSecure handle range protects against 4 common types of attack:

- 1 Handle Snapping**  
Steel reinforcement technology within the backplate provides jimmy resistance. Chamfered backplate shoulders provide anti-grip protection.
- 2 Cylinder Snapping**  
An integrated cylinder guard, visible within the raised backplate design, encases the cylinder to protect it from attack.
- 3 Cylinder De-plugging**  
An integral anti-plug disc, captive within the backplate, locates directly over the cylinder face to shield it from attack.
- 4 Cylinder Drilling**  
An anti-drill disc spins if attacked with a drill, preventing the drill bit from penetrating the cylinder.

## TECHNICAL SPECIFICATION

**Type** High security door handles

**Material** Zinc alloy and steel

**Pz** 92, 92/62

**A Variant** 220mm backplate to suit most standard Pz 92 multipoint locks

**E Variant** 240mm backplate to suit Mila Master and Paddock Lockmaster multipoint locks

**Lever Options** lever/lever,  
lever/pad,

**Cycles** 200,000

**Salt Spray (hrs)** 240 hrs (plated finishes)  
480 hrs (powder coated finishes)

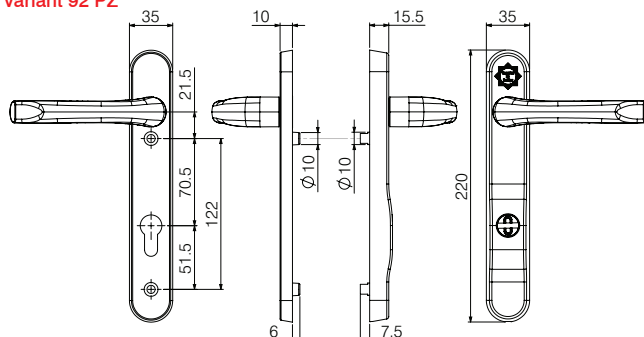
**Accreditations** TS007 BSI Kitemark™ (KM535608) 2 star rating,  
PAS 024 (enhanced security),  
PAS 023 (operational reliability),  
BS EN1906: Grade 4  
BS EN1670: Grade 5,  
Secured by Design (Official Police Preferred Specification)

**UKAS Accredited**

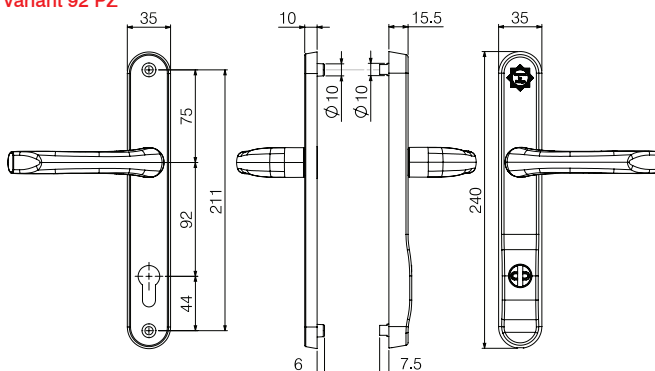
**Test Houses** Exova Warrington  
Mila Test Centre  
British Standards Institute (BSI)

**Finishes** Polished chrome, polished gold, smokey chrome, brushed satin chrome, white, black

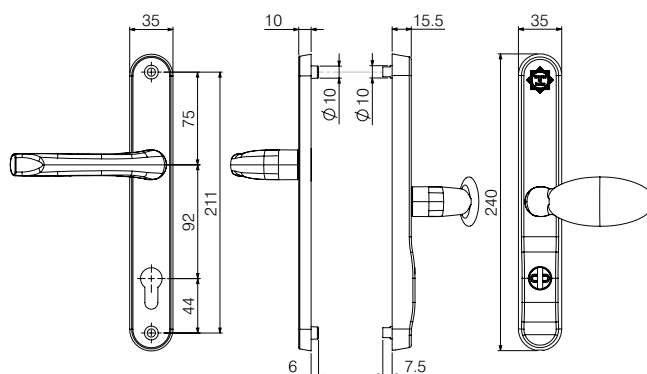
**A Variant 92 PZ**



**E Variant 92 PZ**



**E Variant 92/62 PZ**



## PART NUMBERS

Description	Variant	PZ	Backplate Length	Lever	Polished Chrome	Polished Gold	Smokey Chrome	Brushed Satin Chrome	Black	White
ProSecure Door Handle	A	92	220 mm	Lever/ Lever	050121	050124	050125C	050122	050127	050128
ProSecure Door Handle	E	92	240 mm	Lever/ Lever	050201	050204	050205	050202	050207	050208
ProSecure Door Handle	E	92/62	240 mm	Lever/ Pad	050231	050234	050235	050232	050237	050238